



SOURCE TO SEA

The Halo Project has funding available to help landowners fence and restore waterways, wetlands and forest habitat in Coastal Otago. We are actively looking for landowners to work with, in places where better protection will have the biggest impact on improving freshwater and forest habitat.

The Source to Sea project aims to work with people to:

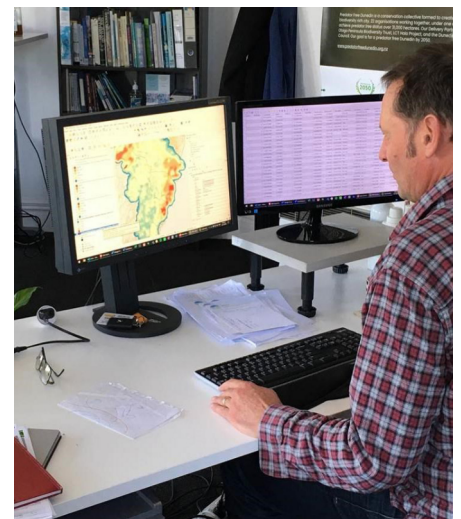
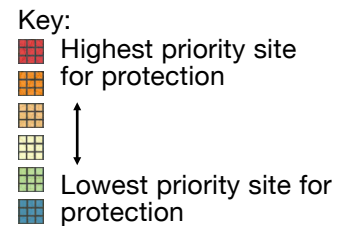
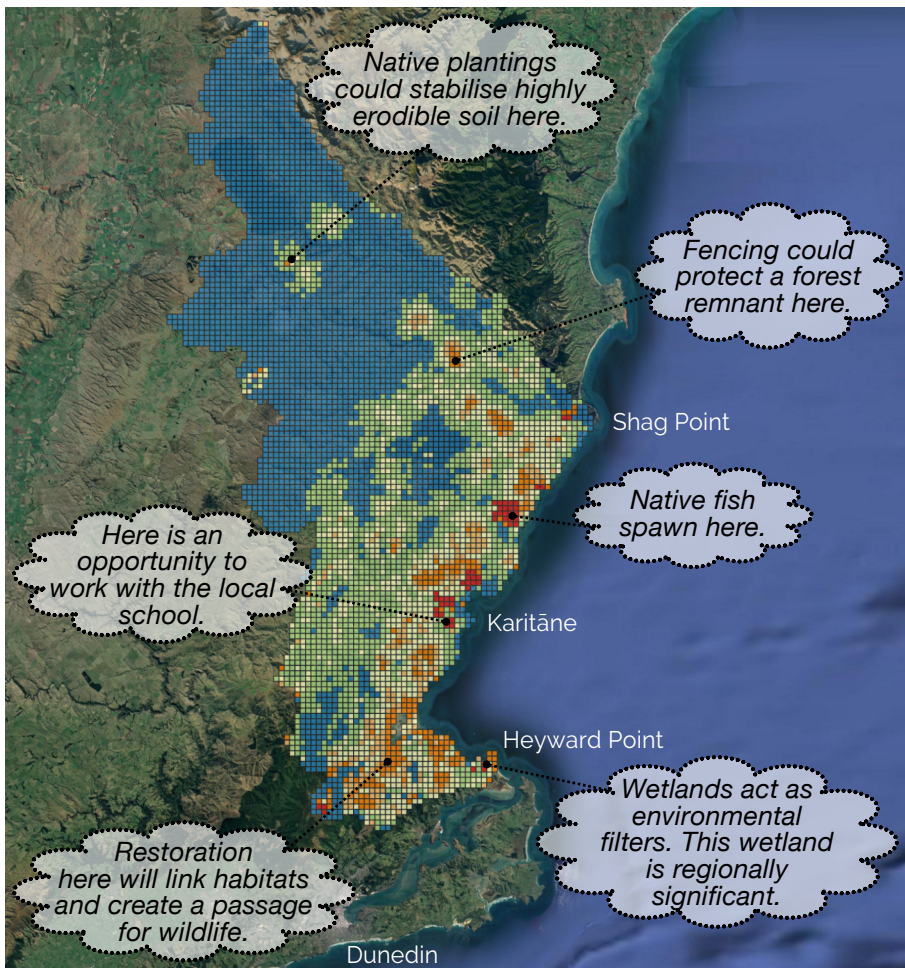
- Help native wildlife, both freshwater and terrestrial;
- Improve forest habitat and freshwater conditions;
- Protect wetlands;
- Provide training and employment opportunities for local people.

10 STEPS TO HABITAT RESTORATION



1 PRIORITISE AREAS

The Source to Sea project covers 124,000 ha including over 2,800 km of wetlands and waterways in seven catchments. Our purpose-built Site Prioritisation Tool helps us narrow down our search for priority sites for protection. It assesses over 20 data sets including information about existing vegetation cover, location of wetlands, erodible soils, presence of endangered wildlife, fish spawning sites and proximity to populations.



Map produced by Site Prioritisation Tool (right), with examples of the different values our project aims to protect or improve (left).




2 ASSESS SITE WITH LANDOWNERS

The people on the ground know their land best. We'll meet with landowners to get a better idea about the values of the site and what we could achieve together.



3 CREATE A RESTORATION PLAN

This is the nuts and bolts. We'll work together to decide what fencing, weed control and planting is needed. We'll have a fencing contractor, plant supplier and a field team lined up. We have also recently launched our **Forest restoration planning and planting guide** to assist with this step. 





4 DECIDE ON FUNDING

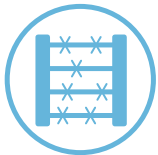
The Halo Project will cost the work that's needed. Landowner contributions (including cash and in-kind labour) for fencing and planting may range from 10-80% of the cost. This will depend on our assessment of:

- the impact restoration will have on freshwater quality and biodiversity;
- whether you have an environment plan for your land;
- your track record of previous forest or freshwater protection work.



5 AGREE TO THE PLAN

It's important that landowners know who's doing what, when and that everyone meets their Health and Safety obligations. We'll confirm the plan with you and all agree to it before work begins.



6 FENCING

All fencing will happen in the first year and will follow the agreed plan.



7 PLANT AND ANIMAL PEST CONTROL

Grass and weeds will need to be controlled to give plants the best chance of survival. Rabbits, hares and possums may need control too. Depending on the agreement, this will be completed by the Halo Project's professional field team or be in-kind labour.



8 PLANTING

Plants from nurseries will be delivered and planted by The Halo Project's field team and/or landowners. This will be staged over multiple years so that hardy plants can establish first and a diverse planting is created.



9 MONITORING AND MAINTENANCE

The state of fences and plants will be checked regularly. Plant protectors will help survival but ongoing weed, grass or pest control will be needed. Our team will help with this.



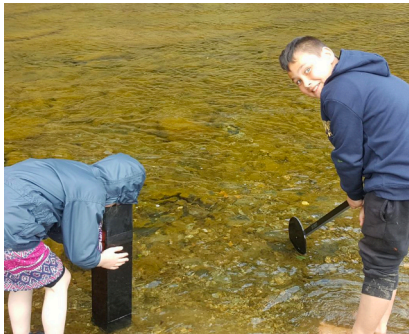
10 CELEBRATE

Our restoration plan is complete! Water conditions are improving, our land is better off and native wildlife is thriving.

WE'RE WORKING WITH LOCAL SCHOOLS, TOO

The Source to Sea initiative facilitates students from local schools to develop a greater understanding of their local waterways by investigating historical, social and ecological values. Students are supported in the use of new technologies and hands-on science to explore and understand their local water catchment using the student-led inquiry model and cross-curriculum learning. Each year, participating schools continue to monitor stream health and carry out their action plan. We offer Source to Sea to schools within the Halo Project boundary.

These schools are already participating: Karitāne, Port Chalmers, Pūrākaunui, Sawyers Bay, St Leonards, Waitati and Warrington.



SOURCE TO SEA IS SUPPORTED BY



Te Uru Rākau
Forestry New Zealand



Department of Conservation
Te Papa Atawhai



PROVINCIAL DEVELOPMENT UNIT

CONTACT US

Register your interest: www.haloproject.org.nz/register

Email: jennifer@haloproject.org.nz | Phone: 021 651 939 | Website: www.haloproject.org.nz

Facebook: www.facebook.com/halobeyondorokonui/

Subscribe to our newsletter by contacting us.

The Halo Project is brought to you by the Landscape Connections Trust (LCT), a Dunedin-based conservation trust established in 2011. The LCT's primary role is to support the planning, administration, fundraising, development and implementation of a variety of environmental projects under the name 'The Halo Project'.

