

Tēnā koutou katoa! In this issue you will read about how we are working with our community to achieve our collective goals. You will meet new team members and learn about upcoming planting days.



**PREDATOR
FREE**



**FOREST HABITAT
RESTORATION**



**FROM
SOURCE TO SEA**



**SEABIRD HABITAT
RESTORATION**

The Halo Project is driven by community input and involvement – thanks to all who participate, give their time, energy, expertise and passion! You are awesome! Ka mau te wehi koutou katoa!



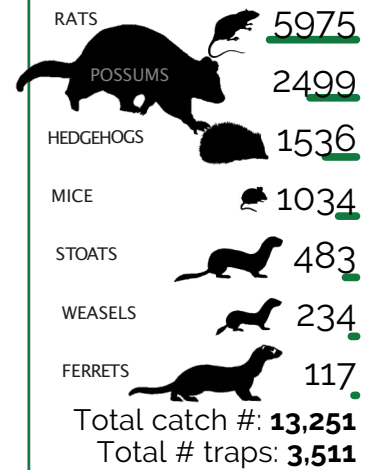
PREDATOR FREE

Halo Project Coordinator Conor surveying the Mt Allan landscape prior to deployment of predator control devices,





Halo Dashboard

2018 - current
Catch data:



Source to Sea data:

 Length of fencing (m): **11,100**

 # of native trees planted: **88,472**

Total
volunteer
hours
32,481



The Halo Project was established with the mission to inspire and work with our communities to connect with, enhance and protect this landscape. We are proud of the unique ways that the Ōtepoti/Dunedin community is striving to do just that.

Residents within the Halo expansion area responded to a survey to let us know that they are motivated to work alongside us to protect rare and threatened species.

Most of those surveyed already tackle predators on their property with 72% of respondents directly affected by predators.

The Halo Project Predator Free team continue to work in collaboration with OSPRI, implementing a succession plan to follow on from TBfree operations in the more than 7000-hectare Mt Allan area with over 250 AT220 traps recently deployed, predominantly on Wenita and City Forest land and areas of native vegetation up the Taieri River.

In the coming months operations will begin in the Silver Peaks, moving from the Painted Forest to the north and east over the next couple of years.

We recently worked with the Ben Rudd Management Trust to assist with the enhancement of a block of land on the northern flank of Flagstaff that was once inhabited by a well-known Dunedin farmer and gardener, turned recluse, Ben Rudd.

Mr Rudd moved to this remote 45 hectare bush block to escape the rat race, living and working on this property from 1921 until just before his death in 1930, at the age of 76.

The team have cut predator control lines through the dense bush and installed 191 self-resetting Goodnature A24 devices, with the goal of increasing biodiversity.

Trustee Alan Thompson says the "intention is to turn it back to native planting and if we can get rid of pests that'd be good"

Halo Project volunteer and ex-Orokonui Ecosanctuary general manager Chris Baillie organises a team of volunteers to manage a predator control line around the Orokonui estuary.

Chris' team consists of high school student Simon Easton, freelance data scientist Nicola Dennis and her family members Archie (7) and partner, rural ambulance manager David Milne. The team is motivated to remove predators to help restore the habitat of the estuary and protect the native birds who call this area home.

The line is checked fortnightly and the data is loaded onto www.trap.nz, a vital step in the process which helps us to keep track of our progress. In the five years since this line was established this group has removed 100 rats, 87 hedgehogs, 23 stoats, 10 mice, 8 ferrets, 5 rabbits and 4 weasels!

The Halo Project Source to Sea team, with the help of hundreds of volunteers are planting tens of thousands of native plants into water catchments around Dunedin, including planting in the catchments that run from Mapounui to the Pūrākaunui estuary, providing new habitat for species moving beyond the Orokonui Ecosanctuary fenceline such as the independent establishment of robins/kakaruaui near the McKessar track.

Volunteer Katrina who manages a predator control line in Pūrākaunui said in 2018 "I just want a kākā in my kōwhai tree before I die" and was elated to discover a kākā on her porch this month!

OSPRI are about to commence their final proof of absence work in the Mt Cargill Management Area, targeting any remaining possums and ferrets. This is the final stage of more than 5 years' of hard work by OSPRI, with support from the local community.

The Halo Project Predator Free team have installed 310 AT220 devices to keep possum numbers at zero-density in this area.

We are proud to work alongside the Predator Free Dunedin delivery partners who are taking care of region-wide predator control.

With the Otago Peninsula Biodiversity Group on the Peninsula, to City Sanctuary hard at work removing predators, conservation in Ōtepoti has never looked better.

Key:

-  Halo Project boundary
-  Orokonui Ecosanctuary
-  Predator Free Zero-Density Zone
-  Predator Free Buffer Zone
-  Forest Habitat restoration sites
-  Source to Sea riparian / wetland habitat restoration



SOURCE TO SEA

Restoring nature and access to Long Beach Recreation Reserve

Fresh new faces have bolstered the Source to Sea team and the team are working hard. They're managing a range of tasks across 25 planting sites. This includes freeing up last years 43,000 plants, prepping new locations for this seasons 91,000 plants, and of course, planting!. The nursery was well cared for over Summer thanks to the help of volunteers. This resulted in 22,659 plants seedlings for the team to plant.

As Field Team Ranger Andrew said when asked for a bit of a bio recently "name's Andrew. I am going to plant all the trees. Your paddocks are just the beginning", sure enough, with the help of volunteers, the team are conquering all tasks thrown at them, with 40% of this year's plants already in the ground.



Above: The Halo Project Source to Sea team is a well-oiled machine. From L-R Thomas, Jeanne, Alice, Mike (front), Damian, Hugh, Andrew (front), Owen, Rosa and Jen (front).

Below: Some of the amazing volunteers who have helped to plant at Whare wera wera/Long Beach in the last few months. Planting a forest has never been easier!



SOURCE TO SEA (continued)

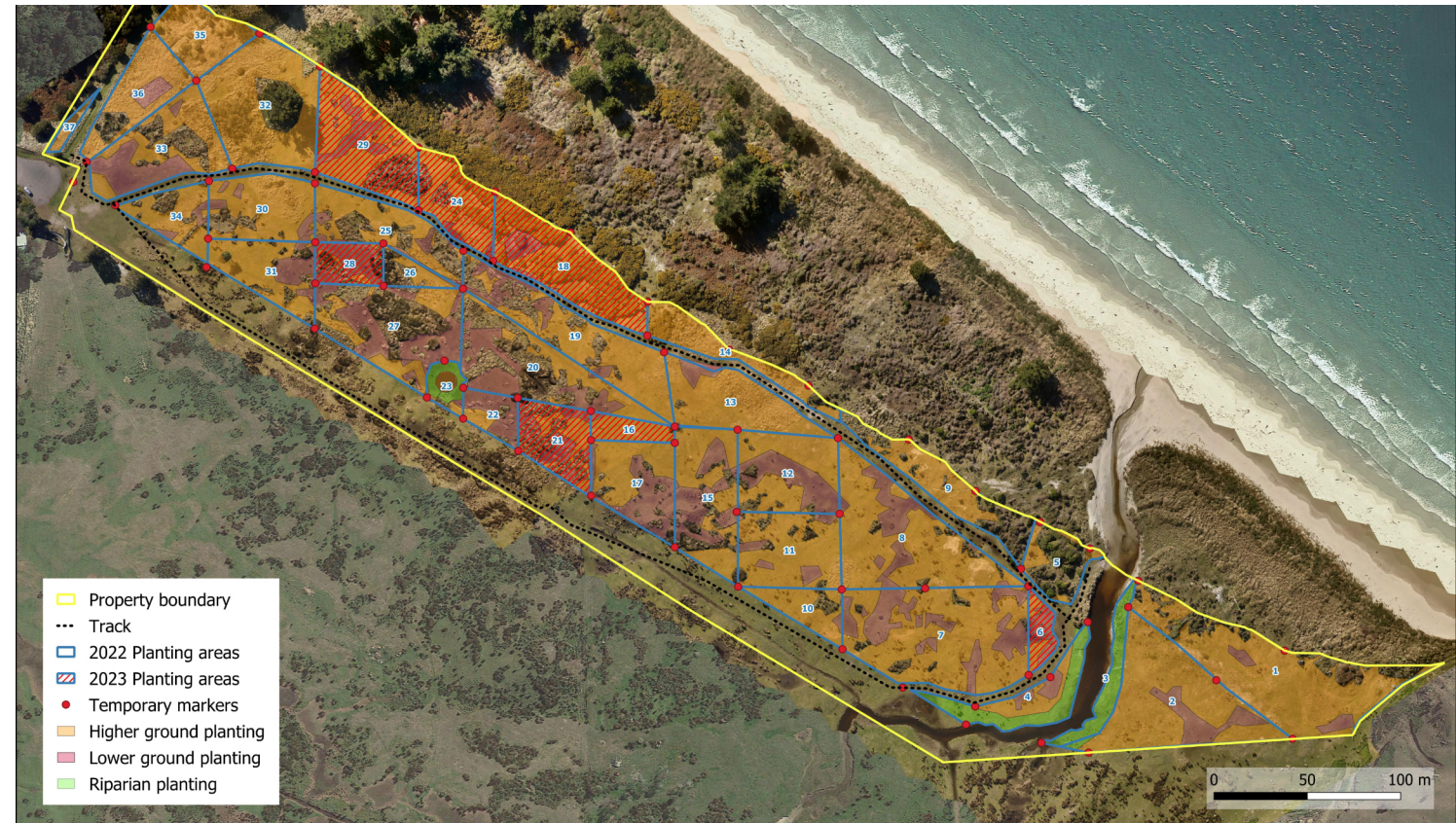
Supported by our community

A massive thank you to all the volunteers that have given their time to planting across the rohe this year! Volunteers have given over 1000 hours since April at the DOC reserve in Whare wera wera/Long Beach. Over half of the 32,000 trees have been planted! Without such profound support from our community, we would not be able to achieve this goal.

The planting plan for this six-hectare reserve was established through collaboration with DOC and knowledgeable locals. Low lying areas have been mapped out and care has been taken to select appropriate native species. Jim Fyfe (DOC) advised us that "Long Beach has been an important forested coastal dune area chosen by local female sea lions to hide away into to give birth to their pups since 2010" and we're thrilled to think of the pakake pups who might utilise this planting space in generations to come.

Winter and Spring are the best seasons for planting so we are eager to work as hard as we can. We would love your help. We host public working bees every Wednesday and on many upcoming weekend dates. We have a variety of tasks at our community planting days from digging to planting, or folding cardboard guards- there is something for all interests and abilities.

We will provide everything you need including weekend sausage sizzles with delicious sausages kindly provided by Deep Creek Delicatessen! Whether you just feel like a nice day in a beautiful location or you're part of a group that would enjoy a team-building, inter-generationally rewarding activity, please reach out. You can email info@haloproject.org.nz for more information or to arrange your volunteer day.



Upcoming Whare Wera Wera/Long Beach Planting Days

- Sat 17 Sep 10-3
- Sun 25 Sep 10-3
- Sat 1 Oct 10-3
- Sat 15 Oct 10-3
- Sun 23 Oct 10-3
- Sat 29 Oct 10-3

Directions: Turn right onto Beach Road and drive to the end of the street.

What to bring: Spade, gloves and gumboots, warm clothes, lunch and a drink. Low fitness is required.

Register: Please contact Jeanne@haloproject.org.nz to register and nab yourself a sausage!

Postponements: Registered volunteers will be notified via email. Or check our Facebook page



The Landscape Connections Trust (LCT) is seeking to recruit two new board members.

The primary role of the Trust is to support the planning, administration, fundraising, development and implementation of a variety of environmental projects under the name 'The Halo Project' with the collaborative mission to enhance, protect and connect with this landscape.

IDEAL APPLICANT:

Trustees will be strategic thinkers who possess skills, knowledge and expertise in some or all of the following:

- Governance;
- Biodiversity management;
- Land use management and farming;
- Management of cultural values;
- Community development;
- Science communication;
- Environmental education
- Working collaboratively with iwi;
- Business management

For more information or to apply please contact alice@haloproject.org.nz .

CONTACT THE RIGHT PERSON

If you wish to get hold of us, you can use the generic email: info@haloproject.org.nz, or choose from below:

Project Director

Rhys Millar

027 3877 866

rhys@haloproject.org.nz

Predator Free Project Manager

Jonah Kitto-Verhoef

027 451 9951

jonah@haloproject.org.nz

Source to Sea Project Manager

Jennifer Lawn

021 651 939

jennifer@haloproject.org.nz

The Halo Project wishes to thank all our volunteers, supporters and funders for their ongoing support.



THANK YOU



Kānoa
Regional Economic Development
& Investment Unit



Te Uru Rākau
Forestry New Zealand

